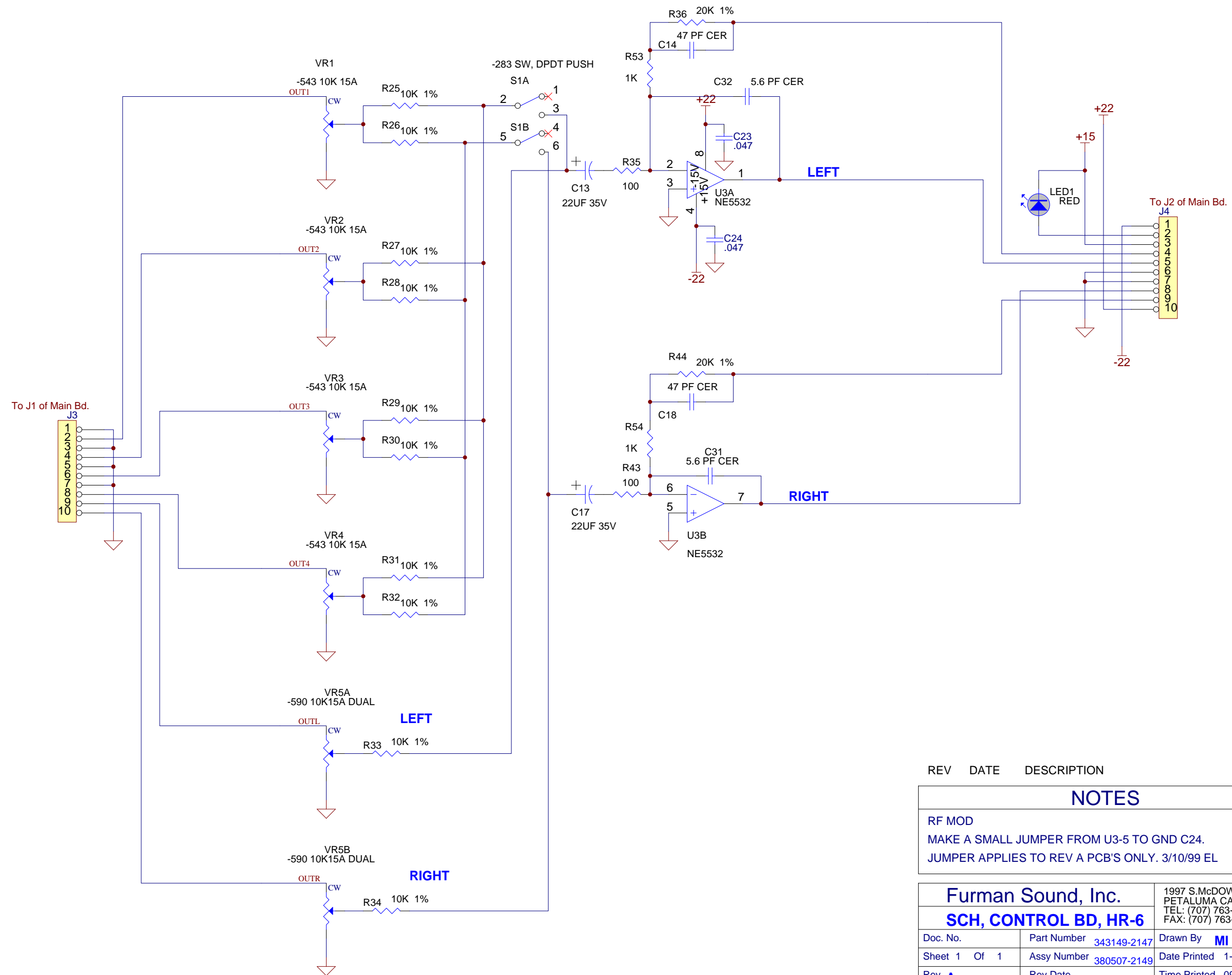


REV DATE DESCRIPTION ECO

NOTES
 * Optional (If output circuit is unstable i.e.-osc)

Furman Sound, Inc.		1997 S.McDOWELL BLVD PETALUMA CA 94954 TEL: (707) 763-1010 FAX: (707) 763-1310	
SCH, MAIN BD, HR-6			
Doc. No.	Part Number 343142-2085	Drawn By MI	
Sheet 1 Of 1	Assy Number 380501-2086	Date Printed 1-Nov-2002	
Rev B	Rev Date 1/6/98 MI	Time Printed 09:26:22	
File N:\HDS-6\Hr-6\Sch\Control2147\REV A\2085_B\2085_B.DDB - 2085_B.SCH			

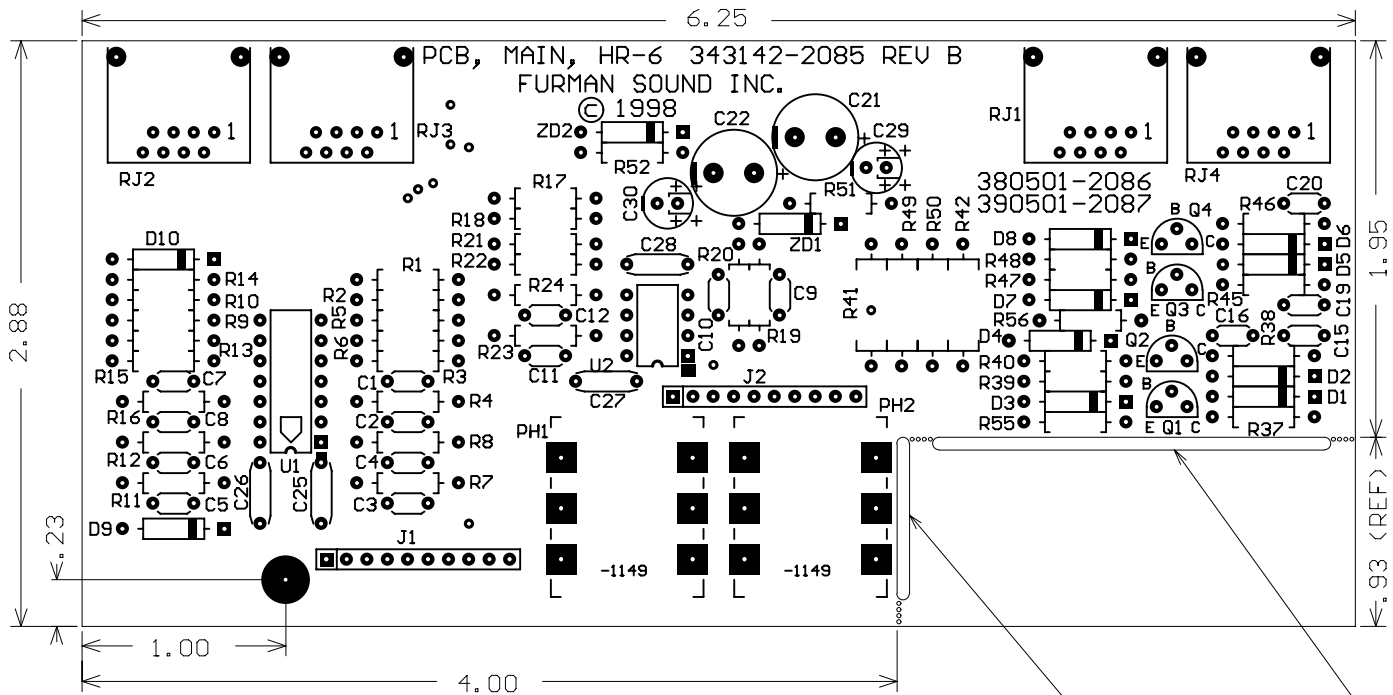


REV DATE DESCRIPTION ECO

NOTES

RF MOD
 MAKE A SMALL JUMPER FROM U3-5 TO GND C24.
 JUMPER APPLIES TO REV A PCB'S ONLY. 3/10/99 EL

Furman Sound, Inc.		1997 S.McDOWELL BLVD Petaluma CA 94954	
SCH, CONTROL BD, HR-6		TEL: (707) 763-1010 FAX: (707) 763-1310	
Doc. No.	Part Number 343149-2147	Drawn By	MI
Sheet 1 Of 1	Assy Number 380507-2149	Date Printed	1-Nov-2002
Rev A	Rev Date 1/6/98 MI	Time Printed	09:27:38
File N:\HDS-6\Hr-6\Sch\Control2147\REV A\2147A1\2147A1.DDB - 2147A.SCH			



2.88

6.25

0.23

1.00

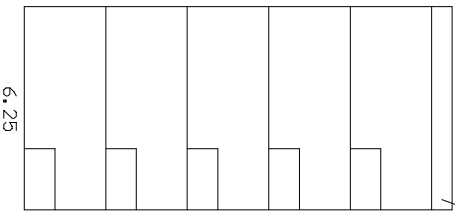
4.00

1.95

0.93 (REF)

SLOT .800 X .062

SLOT 2.000 X .062



6.25

14.9

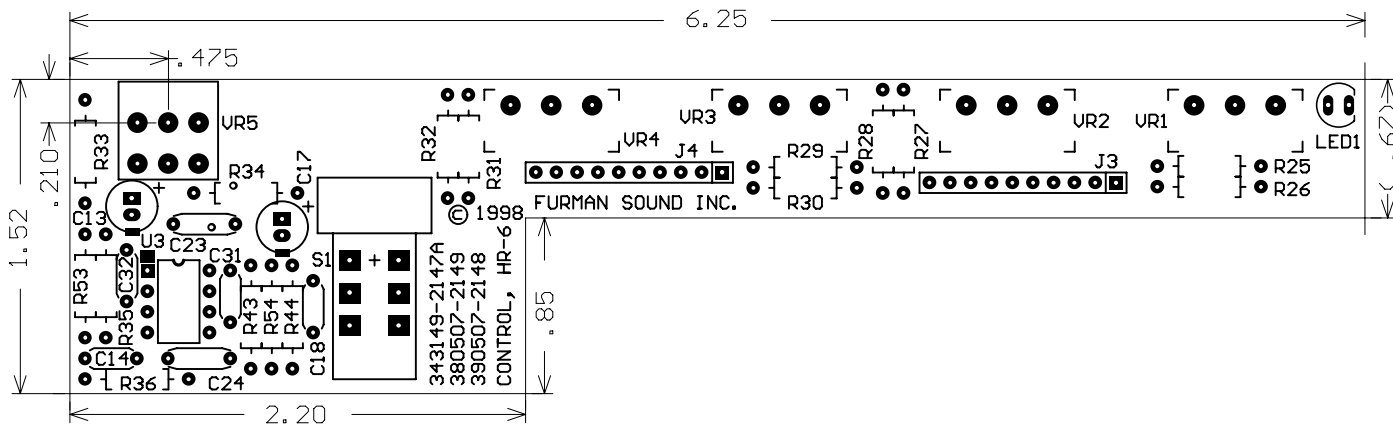
ROUTE AND RETAIN PER ABOVE DIMENSIONS
 PANALIZE 5 UP PER PALLET, CAN FIT 2 PALLETES PER 14 X 16 SHEET.
 SCORE .020 DEEP V GROVE BOTH SIDES BETWEEN PCB,S.
 ADD 6.25 X .40 STRIP WITH SCORE SEPERATING FROM PCB,S ON EDGE SHOWN

NOTES

1. MATERIAL
 DOUBLE SIDED EPOXY GLASS
 NEMA FR4 62mil THICK, 1 OZ COPPER
2. DRILLING
 SEE HOLE LEGEND. ALL HOLE SIZES
 ARE FINISHED SIZE.
3. PLATING
 SOLDER COAT ALL
 EXPOSED COPPER SURFACES
4. SOLDER MASK
 SOLDER MASK OVER BARE COPPER
 SOLDER MASK TO BE GREEN COLOR
 SOLDER MASK MUST NOT FLAKE OR
 SEPARATE DURING SOLDERING.
 TYPICAL SOLDER BATH 480F (248C)
 FOR 3 SECONDS DURATION.
5. FINAL FABRICATION
 FABRICATE TO THE DIMENSIONS SHOWN
 CARD EDGES SHALL BE SMOOTH
 AND FREE FROM BURRS.
6. TOLERANCES
 ALL HOLES TO BE DRILLED
 WITHIN 0.005" OF INDICATED LOCATION,
 RELATIVE TO OTHER HOLES,
 AND WITHIN .015 OF INDICATED LOCATION,
 RELATIVE TO REFERENCE LOCATION.
 HOLE SIZES TO BE FINISHED
 WITHIN +/- .005" OF INDICATED SIZE
 BOARD TRIM SIZE TO BE
 WITHIN -0.00 / +0.015 OF INDICATED SIZE.

PCB MAIN, HR-6

27-Jan-2003 343142-2085 REV B
 Dopl100 Drawing



Original Drawing

27-Jan-2003

FAB, CONTROL, HR-6

343149-2147 REV A

NOTES

1. MATERIAL
DOUBLE SIDED EPOXY GLASS
NEMA FR4 62mil THICK, 1 OZ COPPER

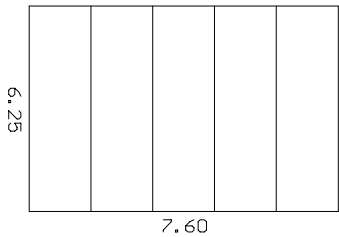
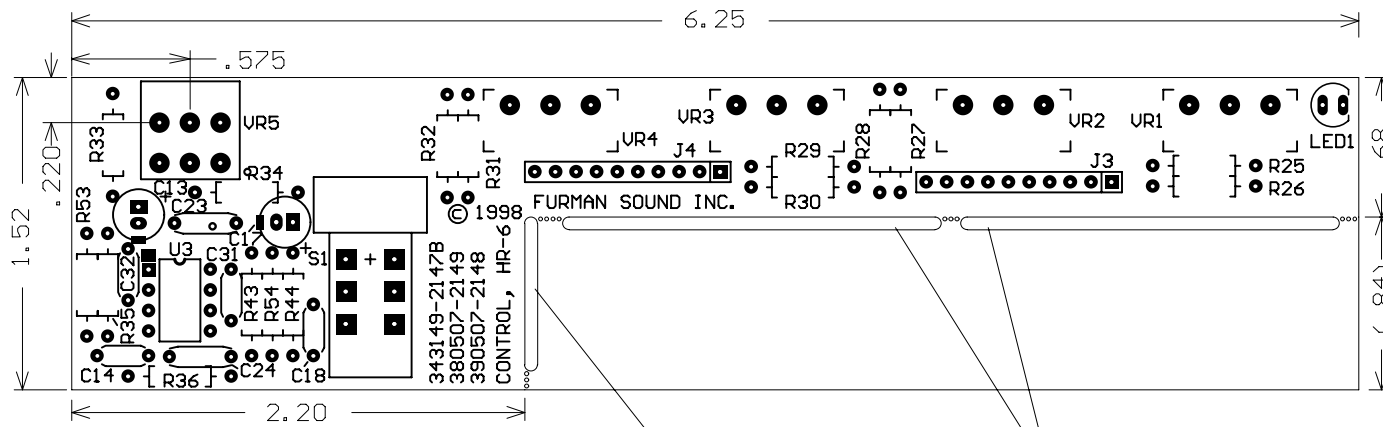
2. DRILLING
SEE HOLE LEGEND. ALL HOLE SIZES
ARE FINISHED SIZE.

3. PLATING
SOLDER COAT ALL
EXPOSED COPPER SURFACES

4. SOLDER MASK
SOLDER MASK OVER BARE COPPER
SOLDER MASK TO BE GREEN COLOR
SOLDER MASK MUST NOT FLAKE OR
SEPARATE DURING SOLDERING.
TYPICAL SOLDER BATH 480F (248C)
FOR 3 SECONDS DURATION.

5. FINAL FABRICATION
FABRICATE TO THE DIMENSIONS SHOWN
CARD EDGES SHALL BE SMOOTH
AND FREE FROM BURRS.

6. TOLERANCES
ALL HOLES TO BE DRILLED
WITHIN 0.005" OF INDICATED LOCATION,
RELATIVE TO OTHER HOLES,
AND WITHIN .015 OF INDICATED LOCATION,
RELATIVE TO REFERENCE LOCATION.
HOLE SIZES TO BE FINISHED
WITHIN +/- .005" OF INDICATED SIZE
BOARD TRIM SIZE TO BE
WITHIN -0.00 / +0.015 OF INDICATED SIZE.



ROUTE AND RETAIN PER ABOVE DIMENSIONS
 PANALIZE 5 UP PER PALLET, CAN FIT 6 PALLETS PER 14 X 24 SHEET.
 SCORE .020 DEEP V GROVE BOTH SIDES BETWEEN PCB,S.

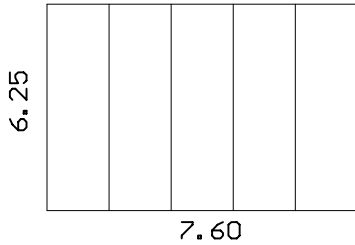
- ### NOTES
1. MATERIAL
 DOUBLE SIDED EPOXY GLASS
 NEMA FR4 62mil THICK, 1 OZ COPPER
 2. DRILLING
 SEE HOLE LEGEND. ALL HOLE SIZES
 ARE FINISHED SIZE.
 3. PLATING
 SOLDER COAT ALL
 EXPOSED COPPER SURFACES
 4. SOLDER MASK
 SOLDER MASK OVER BARE COPPER
 SOLDER MASK TO BE GREEN COLOR
 SOLDER MASK MUST NOT FLAKE OR
 SEPARATE DURING SOLDERING.
 TYPICAL SOLDER BATH 480F (248C)
 FOR 3 SECONDS DURATION.
 5. FINAL FABRICATION
 FABRICATE TO THE DIMENSIONS SHOWN
 CARD EDGES SHALL BE SMOOTH
 AND FREE FROM BURRS.
 6. TOLERANCES
 ALL HOLES TO BE DRILLED
 WITHIN 0.005" OF INDICATED LOCATION,
 RELATIVE TO OTHER HOLES,
 AND WITHIN .015 OF INDICATED LOCATION,
 RELATIVE TO REFERENCE LOCATION.
 HOLE SIZES TO BE FINISHED
 WITHIN +/- .005" OF INDICATED SIZE
 BOARD TRIM SIZE TO BE
 WITHIN -0.00 / +0.015 OF INDICATED SIZE.

B MI 1-12-98 MOVED UR5 AND S1 LOCATIONS

Top 10 Drawing
 27-Jan-2003

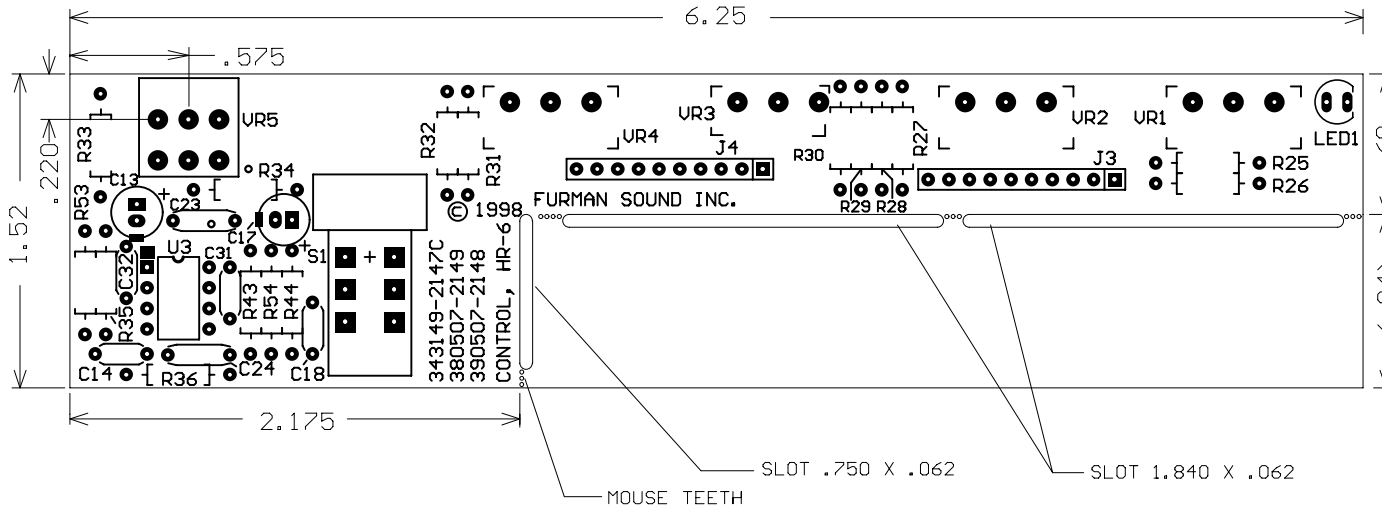
FAB, CONTROL, HR-6

343149-2147 REV B



ROUTE AND RETAIN PER ABOVE DIMENSIONS
 PANALIZE 5 UP PER PALLET, CAN FIT 6 PALLETS PER 14 X 24 SHEET.
 SCORE .020 DEEP V GROOVE BOTH SIDES BETWEEN PCB,S.

C MI 3-11-98 ADDED MISSING TRACE BETWEEN R34 AND C17 POS LEAD
 BM 8-13-98 ECO#306 ADDED GND JUMPER TRACE BETWEEN U3 PIN5 AND C24 GND
 CHANGED LEFT SIDE WIDTH FROM 2.20 TO 2.175 INCH
 B MI 1-12-98 MOVED UR5 AND S1 LOCATIONS
 27-Jan-2003



NOTES

1. MATERIAL
 DOUBLE SIDED EPOXY GLASS
 NEMA FR4 62mil THICK, 1 OZ COPPER
2. DRILLING
 SEE HOLE LEGEND. ALL HOLE SIZES
 ARE FINISHED SIZE.
3. PLATING
 SOLDER COAT ALL
 EXPOSED COPPER SURFACES
4. SOLDER MASK
 SOLDER MASK OVER BARE COPPER
 SOLDER MASK TO BE GREEN COLOR
 SOLDER MASK MUST NOT FLAKE OR
 SEPARATE DURING SOLDERING.
 TYPICAL SOLDER BATH 480F (248C)
 FOR 3 SECONDS DURATION.
5. FINAL FABRICATION
 FABRICATE TO THE DIMENSIONS SHOWN
 CARD EDGES SHALL BE SMOOTH
 AND FREE FROM BURRS.
6. TOLERANCES
 ALL HOLES TO BE DRILLED
 WITHIN 0.005" OF INDICATED LOCATION,
 RELATIVE TO OTHER HOLES,
 AND WITHIN .015 OF INDICATED LOCATION,
 RELATIVE TO REFERENCE LOCATION.
 HOLE SIZES TO BE FINISHED
 WITHIN +/- .003" OF INDICATED SIZE
 BOARD TRIM SIZE TO BE
 WITHIN -0.00 / +0.015 OF INDICATED SIZE.

Druid Drawing

FAB, CONTROL, HR-6
 343149-2147 REV C

HR-6, CONTROL BOARD

		FURMAN SOUND, INC	
		1997 S.McDOWELL BVD,	
		PETALUMA, CA 94954	
		TEL: (707) 763-1010	
		FAX: (707) 763-1310	
ASY 390507-2148		SHEET 1 OF 1	DRAWN BY: MI
LBR 380507-2149			
PCB 343149-2147	REV C 8/19/98 BM		2147C.NET